



# Taleni africa

*Gateway to Namibia's  
premier holiday destinations!*

# Taleni Africa Collection

Explore Namibia's main attractions while experiencing the true art of hospitality at Taleni Africa's accommodation establishments! Whether you want to roam Etosha's animal kingdom, discover the historic Swakopmund or climb the towering red sand dunes of the Namib Desert at Sossusvlei, Taleni Africa offers the best value for money holiday experience in Namibia.

## Sossusvlei Lodge

Sossusvlei Lodge is a luxurious retreat situated adjacent to the oldest desert in the world. Enter a classic lifestyle of comfort, filled with the thoughtful touch of attentive staff. Explore the vastness of the unspoilt natural environment with various exciting activities at the Sossusvlei Lodge Adventure Centre.

## Desert Camp

Desert Camp offers self-catering accommodation a mere 5 kilometres from the entrance to Sesriem and Sossusvlei. The unsurpassed view over the desert landscape and surrounding mountains makes Desert Camp an absolute must for nature lovers and photographers.

## Desert Quiver Camp

Desert Quiver Camp uniquely combines modern self-catering accommodation with comfort and style. Conveniently located a mere 5km from the entrance gate to Sossusvlei, the inspiring scenery characterised by granite outcrops, spectacular views and roaming wildlife will captivate your senses.

## Sossus Oasis Camp Site

Experience luxury camping at the entrance to Sesriem and Sossusvlei. The Sossus Oasis Camp Site offers individually shaded camp sites, each with its own facilities. Within walking distance is a fully stocked shop and Internet café.

## Hotel Zum Kaiser

The luxurious Hotel Zum Kaiser is situated at a prime location in Sam Nujoma Avenue and offers direct access to the town's vibrant street life, quaint architecture, iconic coffee shops and pristine beaches. Enjoy Delectable Cuisine at the on-site Bistro Zum Kaiser and experience Spectacular Sunsets from the hotel's Roof Terrace.

## Etosha Trading Post

The Etosha Trading Post Campsite is ideally situated only 6.5 km from the Okaukuejo entrance to Etosha National Park, and caters for Individual travelers (8 campsites with private bathroom facilities) and Groups of friends or family exploring Etosha together (4 well equipped spacious campsites). Take a refreshing dip in the camp pool and watch small game visiting the waterhole. Within walking distance is a well-stocked shop, fuel station and tyre workshop.

## Etosha Village

Etosha Village is a prime destination for nature lovers and is situated only 2 km from the Andersson entrance gate to Etosha National Park, near Okaukuejo. At Etosha Village nature and luxury are in perfect harmony through design, comfort and the thoughtful touch of attentive staff to contribute to a truly memorable safari style experience.

Etosha National Park

Namibia

Swakopmund  
Walvis Bay

•Windhoek

Sossusvlei  
& Sesriem

Lüderitz

## Taleni Africa's Unique Selling Points:

- The **Taleni Africa Collection** has excellent **Location**, all our Lodges are situated right next to the famous **National Parks of Namibia**
- We aim to offer **Exquisite Meals** accompanied by **Excellent Service**
- **Comfortable, Stylish Accommodation**
- We offer enticing and informative **Activities** as a means of interacting with the **Environment** and beautiful **Namibian Landscape**



## *Luxury right at the entrance gate to Sesriem Canyon & the famous Sossusvlei*

Situated adjacent to the oldest desert in the world, **Sossusvlei Lodge** is a luxurious retreat in this premier tourist attraction area in Namibia. Found at the entrance gate to the Namib Naukluft Park, the Lodge offers direct access to the towering red sand dunes, the famous pan of Sossusvlei, the scorched black trees of Dead Vlei and the remarkable depths of the Sesriem Canyon.

Experience the true art of Hospitality with the thoughtful touch of attentive staff to contribute to a truly memorable experience.

Facilities include a sparkling pool, bar, beer garden and an al fresco terrace where one can enjoy exquisite food, award-winning wines and magnificent views of the floodlit waterhole.

The **Sossusvlei Lodge Adventure Centre** provides a range of activities including Guided Excursions, Sun-downer Trips, Quad Buggy Drives, Hot Air Ballooning, Helicopter Flips, Scenic Flights and much more to explore the area's natural beauty.





## *Accommodation Units*

The **Sossusvlei Lodge** accommodation units blends in perfectly with the spectacular natural surrounds and comprises of 44 Superior Units, 6 Standard Units and 1 luxurious Junior Suite.

The **Superior Units** boasts a patio to enjoy the magnificent views over the Desert landscapes and a spacious air-conditioned bedroom featuring twin beds. In addition there is a corner couch, refreshment area with tea and coffee making facilities, fridge, luggage space and an in-room safe. Each of the stylish en-suite bathrooms is equipped with a comfortable corner bathtub, spacious shower, toilet and double vanity.

The **Standard Units** doubles up as our **Family units** as it features a lockable inter-leading door between the two bathrooms. Each unit enjoys the same features as at the Superior Units and the en-suite bathroom is equipped with a spacious shower, double vanity and toilet.

The **Junior Suite** ensures privacy and tranquillity with a fantastic view of the surrounding Desert plains. The Suite consists of a spacious air-conditioned bedroom with a luxurious queen-size bed, an adjacent living area and a private terrace boasting a small splash pool and comfortable seating to fully take advantage of the unsurpassed views. In addition there is an elegant bathroom with walk-in shower, separate toilet, double vanity and a freestanding feature bath underneath a skylight to admire the star studded skies whilst taking a relaxing bath. Amenities include a refreshment area with tea and coffee making facilities, fridge, spacious closet, comfortable couch, safe and a complimentary turn-down service.

Two of the Superior Units are designed to be **handicapped and wheelchair friendly** featuring no steps and are equipped with wider doors. Handles have been fitted in the bathroom and the shower has an open design for easier access.





## *Facilities*

Facilities at **Sossusvlei Lodge** includes a **restaurant** and dining area that has an **Al Fresco Terrace** offering magnificent views of the Desert plains and in the evening of the floodlit waterhole where you can watch the passing parade of oryx, springbok, jackal, ground squirrel and hyena, whilst enjoying exquisite food and award-winning wines. Indeed a visual and culinary contrast, bearing in mind the relative remoteness of this exceptional location.

The **Bar area** offers a welcoming place where one can cool off and enjoy some refreshments after a day's adventure. Relax in the adjacent **Beer Garden** under the shady age-old camel thorn trees or enjoy spectacular sunsets from our **Sundowner Deck** above the bar.

Take a refreshing dip in the **Sparkling Pool** and unwind on the sunbeds around the pool area whilst sipping on enticing cocktails that can be served from the bar area.

The onsite **Curio Shop** is the best place to find gifts and memorabilia.



# Sossusvlei Lodge Adventure Centre

Explore the vastness of Namibia's unspoiled natural environment with the **Sossusvlei Lodge Adventure Centre**.

Experience the desert beauty from a bird's eye view in a **Hot Air Balloon**, by **Aircraft** or by **Helicopter**. Take a **Guided Drive** through scenic natural beauty in a custom built and comfortable all-terrain vehicle or with a **Quad Buggy**.

Other exciting activities include **Sundowner Trips**, **Archery** and **Guided Walks**.

The **Adventure Centre** is one of a kind in the area, and our Activity Managers are ready to assist with planning your day of Adventure in the desert.

Take your **Conference**, seminar or launch on holiday! Sossusvlei Lodge offers a unique destination for both **indoor** and **outdoor conferencing** in Namibia.

Host your special **function**, **bush dinner** or **wedding** in the heart of the Namib Desert! With views of towering red sand dunes amidst the vast desert plains, this is the most awe-inspiring venue nature has on offer.



# Location

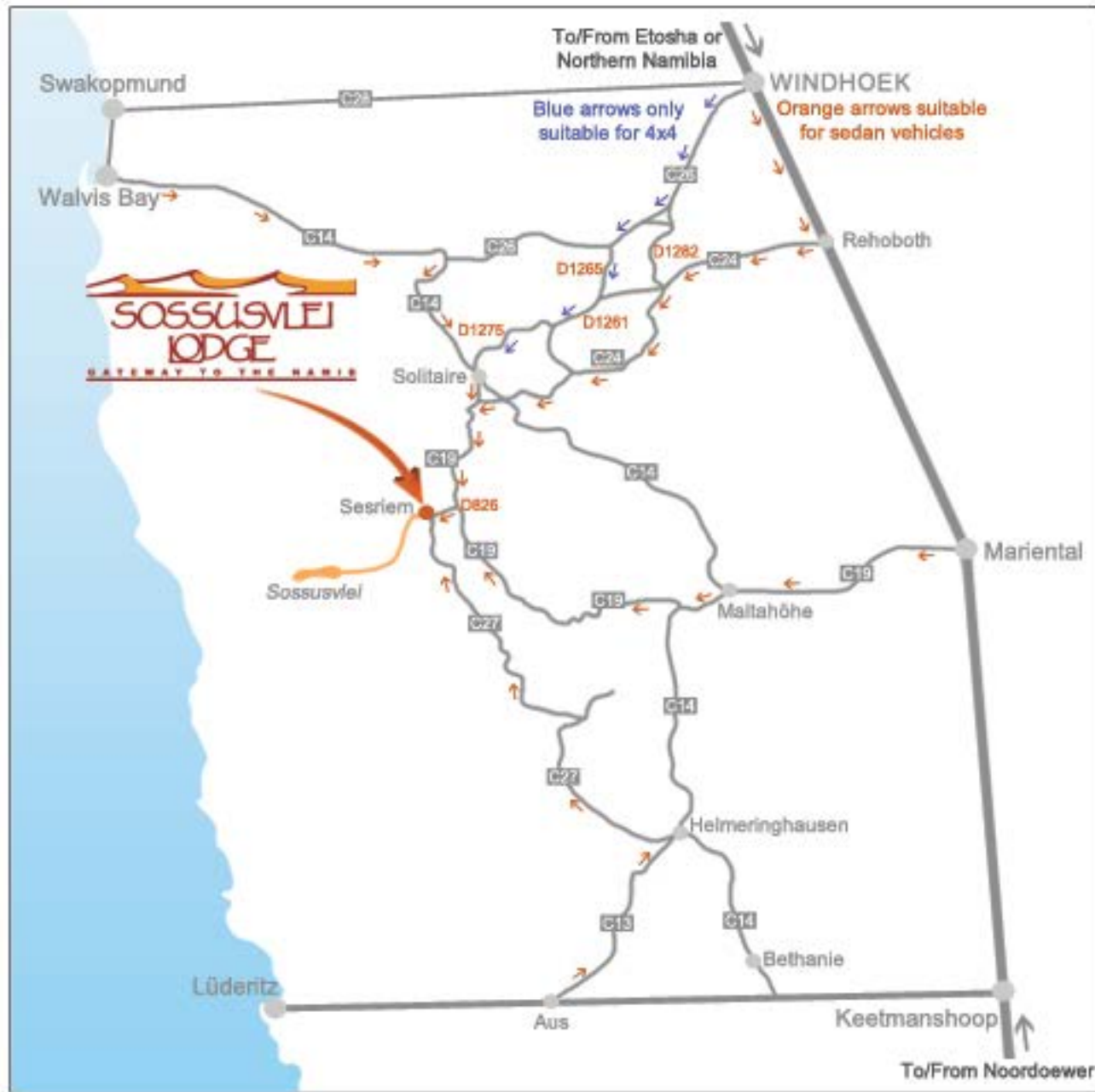
# Distance From

Southern Namibia, amidst the **Namib Desert**. At the entrance gate to the famous Sossusvlei and Sesriem Canyon.

**GPS Coordinates:**  
**S24°29' 12.1" E015°48' 15.0"**

**Airfield: Sossusvlei Lodge Landing Strip**  
Coordinates S24°29'22" E015°48'55", elev. 762m (2500'), rwy. 31/13, 1200m (3937')

- Windhoek - Approx 330 km
- Swakopmund - 360 km
- Lüderitz - 506 km
- Etosha Village - 750 km



## TALENI AFRICA RESERVATIONS

Tel: +27 21 930 4564 | Fax: +27 21 914 9930

Email: [reservations@sossusvleilodge.com](mailto:reservations@sossusvleilodge.com) | Web: [www.sossusvleilodge.com](http://www.sossusvleilodge.com)

Facebook: [www.facebook.com/SossusvleiLodge](http://www.facebook.com/SossusvleiLodge) | Twitter: @SossusvleiLodge



*Self-catering at its Best amidst unparalleled Desert Beauty...*

**Desert Camp** is situated only 5 km from the entrance gate to Sossusvlei and Sesriem Canyon in the Namib Naukluft Park. Nestled under centuries old thorn trees, **Desert Camp** offers an unsurpassed view over the desert landscape and surrounding mountains.

The 28 affordable, self-catering accommodation units are equipped with an en-suite bathroom, shaded veranda with a fitted kitchenette, barbeque, power points and an adjacent parking area. Each air-conditioned twin-bedded bedroom features a fold-out sleeper couch where 2 small children (under 12) can be accommodated for free when sharing with their parents.

Facilities at the main building include a fully stocked and serviced bar with big screen television, a sparkling swimming pool and 2 communal boma-areas which are perfect for groups travelling together. Fresh food supplies can be ordered daily at reception.

Meals can be enjoyed at the nearby **Sossusvlei Lodge** restaurant. Exciting desert activities like Guided Excursions to Sossusvlei, Walks to Elim Dune, Sundowner Drives and magnificent Scenic Flights over the dunes and coast can be booked at the **Sossusvlei Lodge Adventure Centre**.







## *Self-Catering Accommodation Units*

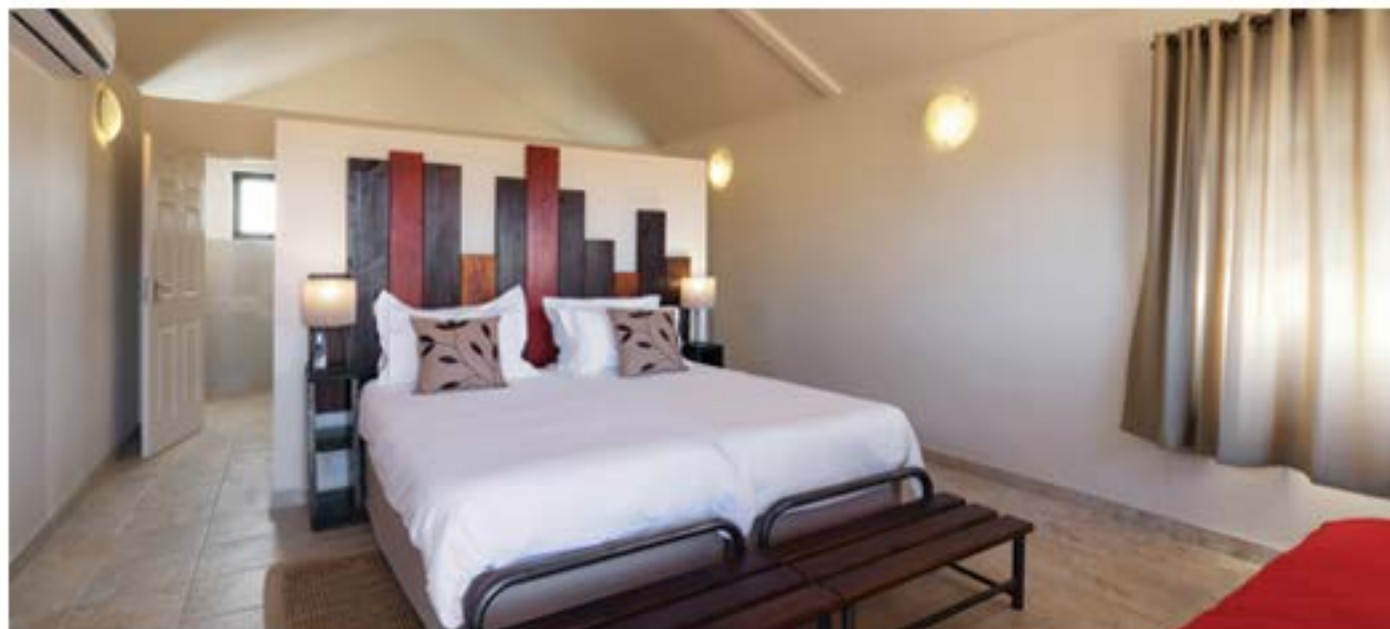
28 Uniquely designed en-suite self-catering chalets with private parking are available.

Each spacious unit feature air-conditioning, twin beds, space for suitcases, shelves, hanging space, an electronic safe and a fold-out sleeper couch where two small children (under 12) can be accommodated free of charge if shared with two paying adults.

The en-suite bathroom is equipped with a spacious walk in shower, toilet and wash basin with vanity space.

The patio feature a unique barbeque facility that allows spectacular views over the vast Desert plains, fitted kitchenette with a wash up area, under counter fridge, 2-plate hob and a wooden bench for seating.

The two wheelchair friendly units are accessible from a cemented path, have no steps and have been fitted with handles in the bathroom for easy access.





## *Facilities & Activities*

Facilities at the main building include a fully stocked and serviced **bar** with big screen television, a **sparkling swimming pool** and Wi-Fi connectivity.

For groups traveling together, the two **communal bomas** provide an ideal area for everyone to get together for a barbeque or just to socialise. Adjacent to the swimming pool, bar and public toilets, these areas have preparation, cooking, dining and wash-up facilities.

**Meals** can be enjoyed at the nearby Sossusvlei Lodge restaurant or **fresh food supplies** can be ordered daily at the **Desert Camp** reception.

There is a **Walking Trail** available on the premises and other exciting desert activities like Guided Excursions to Sossusvlei, Quad Buggy Nature Drives, Elim Dune Walks, Sundowner Drives and magnificent Scenic Flights or Helicopter flips over the dunes and to the coast can be booked at the **Sossusvlei Lodge Adventure Centre**.

A fully stocked shop, fuel and an Internet café is available at the nearby **Sossus Oasis Service Station**.



## Location

On C27 / D826 road in Southern Namibia, amidst the **Namib Desert**. 5km from the entrance gate to the famous Sossusvlei and Sesriem Canyon.

GPS Coordinates:

**S24°28' 57.7" E015°50' 02.2"**

**Airfield: Sossusvlei Lodge Landing Strip**

Coordinates S24°29'22" E015°48'55", elev. 762m (2500'), rwy. 31/13, 1200m (3937')



## Distance From

Windhoek - Approx 330 km

Swakopmund - 360 km

Lüderitz - 506 km

Etosha Village - 750 km

Sossusvlei Lodge - 5 km



Taleni  africa



### TALENI AFRICA RESERVATIONS

Tel: +27 21 930 4564 | Fax: +27 21 914 9930

Email: [reservations@desertcamp.com](mailto:reservations@desertcamp.com) | Web: [www.desertcamp.com](http://www.desertcamp.com)

Facebook: [www.facebook.com/DesertCamp](http://www.facebook.com/DesertCamp) | Twitter: [@DesertCampNam](https://twitter.com/DesertCampNam)



## *Self-Catering Excellence at the edge of the Namib*

**Desert Quiver Camp** uniquely combines modern self-catering accommodation with comfort and style. Conveniently located a mere 5km from the entrance gate to Sossusvlei, the inspiring scenery characterised by granite outcrops, spectacular views and roaming wildlife will captivate your senses.

The 24 uniquely designed self-catering accommodation units have spacious bedrooms, en-suite bathrooms, shaded patio areas and private parking. Each twin-bedded room features a fold-out sleeper couch to accommodate 2 small children (under 12) free of charge when sharing with 2 full paying adults. The patio is equipped with a barbeque facility, a fitted kitchenette with under counter fridge, 2 plate hob and a wooden bench for seating. Utility boxes with most utensils needed are available at reception and fresh food supplies can be ordered daily.

Facilities at the main building include a fully stocked bar with a big screen television, a sparkling swimming pool and 2 communal boma-areas which are perfect to cater for groups travelling together.

Meals can be enjoyed at the nearby **Sossusvlei Lodge** restaurant and their Adventure Centre offers a range of exciting desert activities to explore the area.





## *Self-Catering Accommodation Units*

The 24 modern self-catering accommodation units at Desert Quiver Camp are uniquely designed to blend in perfectly with the natural surrounding environment.

Each spacious bedroom features twin beds, a fold-out sleeper couch, space for suitcases, shelves, hanging space and an electronic safe. The en-suite bathroom is equipped with a shower, toilet and wash basin with vanity space.

The patio is equipped with a barbeque facility, fitted kitchenette with a wash up area, under counter fridge, 2-plate hob and a wooden bench for seating. Utility boxes with most utensils needed for self-catering are available at reception and fresh food supplies can be ordered daily.

The two handicapped and wheelchair friendly units are situated nearby the main building. They have no steps and the showers have been enlarged and fitted with handles for easy accessibility.

Two small children under the age of 12 years can be accommodated on the fold-out sleeper couch free of charge when sharing the room with two full paying adults.





## *Facilities & Activities*

Facilities include a fully stocked and serviced **bar** with big screen television, a **sparkling swimming pool** with views towards Elim Dune and the Desert Landscapes as well as **Wi-Fi** connectivity.

For groups traveling together, the two **communal bomas** provide an ideal area for everyone to get together for a barbeque or just to socialise. Each Boma has a kitchen with a fridge, stove, preparation area, wash-up facilities and a serving hatch. The outside areas have constructed seating with loose cushions and wooden benches to provide seating around the central fire-pit.

**Meals** can be enjoyed at the nearby **Sossusvlei Lodge** restaurant or **fresh food supplies** can be ordered daily at the **Desert Camp** reception.

There is a **Walking Trail** available on the premises and other exciting Desert activities can be booked at the **Sossusvlei Lodge Adventure Centre**.

A fully stocked shop, fuel and an Internet café is available at the nearby **Sossus Oasis Service Station**.



# Location

On C27 / D826 road in Southern Namibia, amidst the **Namib Desert**. 5km from the entrance gate to the famous Sossusvlei and Sesriem Canyon.

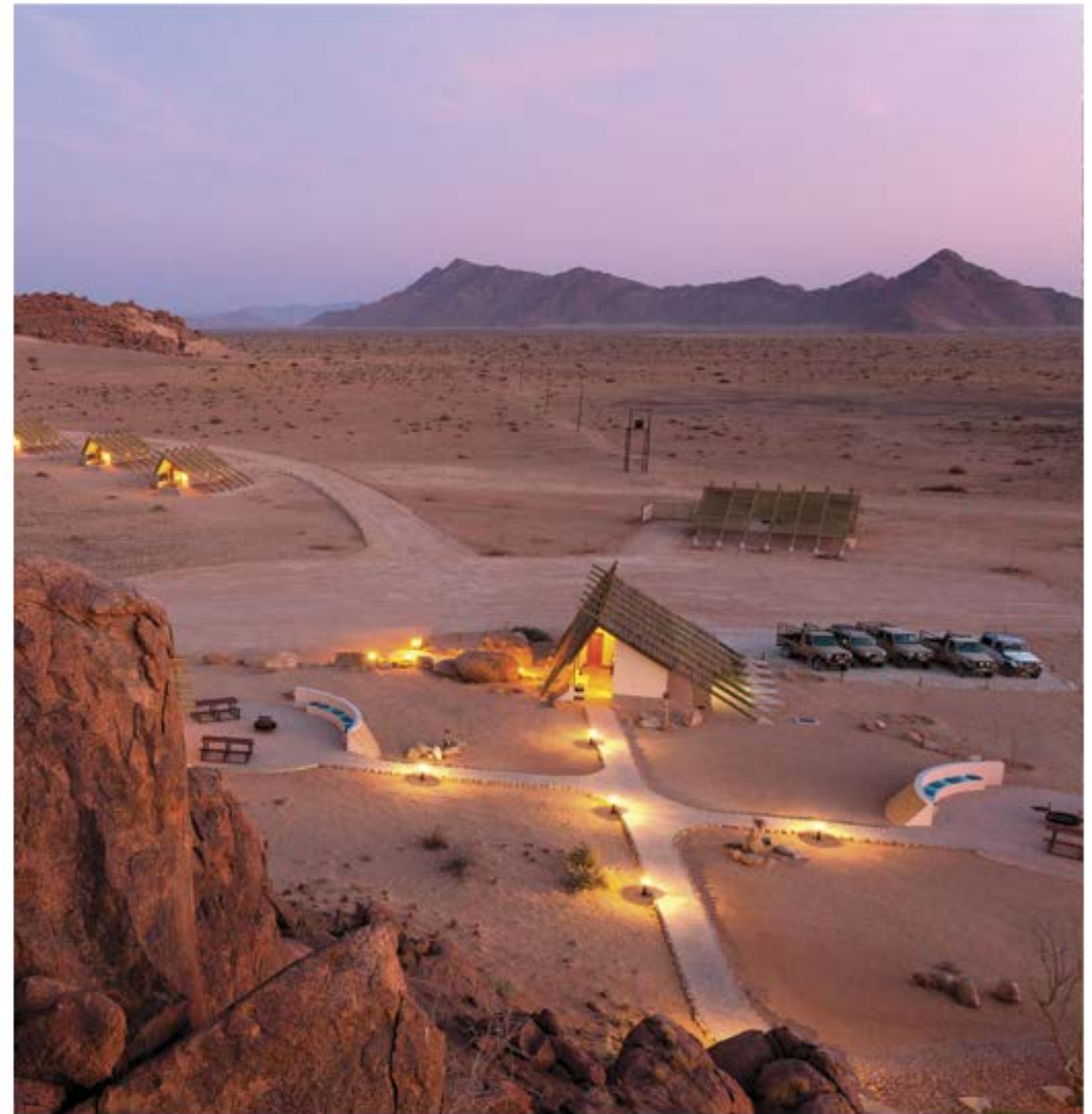
**GPS Coordinates:**  
**24°29'14.2"S 15°50'25.9"E**

**Airfield: Sossusvlei Lodge Landing Strip**  
Coordinates S24°29'22" E015°48'55", elev. 762m (2500'), rwy. 31/13, 1200m (3937')



# Distance From

- Windhoek - Approx 330 km
- Swakopmund - 360 km
- Lüderitz - 506 km
- Etosha Village - 750 km
- Sossusvlei Lodge - 5 km



## TALENI AFRICA RESERVATIONS

Tel: +27 21 930 4564 | Fax: +27 21 914 9930

Email: [reservations@desertquivercamp.com](mailto:reservations@desertquivercamp.com) | Web: [www.desertquivercamp.com](http://www.desertquivercamp.com)

Facebook: [www.facebook.com/DesertQuiverCamp](http://www.facebook.com/DesertQuiverCamp) | Twitter: [@DesertQuiver](https://twitter.com/DesertQuiver)



## *Luxury Camping at the Entrance to Sesriem and Sossusvlei*

The luxurious Camp Site is nestled in the spectacular grasslands of the Namib offering exquisite views of the desert plains, surrounding mountains and Elim Dune. Each site is equipped with its own bathroom and kitchen wash-up facilities.

The **Sossus Oasis Camp Site** has a sparkling pool and within walking distance is a fully stocked shop and Internet café. A **Group Camp Site** facility is also available larger groups traveling together.

The **Sossus Oasis Service Station** Shop offers snacks, drinks, ice, groceries, wood, toiletries, curios, clothing as well as fuel and a tyre workshop service.

The nearest restaurant is situated at the adjacent **Sossusvlei Lodge** where exciting desert activities can also be enjoyed at the **Sossusvlei Lodge Adventure Centre**.

Treasure the ambience of the Namib Desert under star studded skies to the tune of the Barking Gecko and the far cry of a jackal.







## *Camp Sites*

The **Sossus Oasis Camp Site** offers 12 shaded individual sites in a semi-circle layout within a clean, tidy and well-kept environment.

Each site has its own toilet, basin, hot/cold shower, barbeque, kitchen wash-up facility and electricity.

Enjoy magnificent views from your paved veranda or relax around a campfire listening to the night-time noises of the local wildlife in the Namib.





## Facilities

The well-kept sparkling **swimming pool** is a focal point in the centre of the Sossus Oasis Camp Site.

Adjacent to the Camp Site is the **Sossus Oasis Service Station** offering fuel, an Internet Café and a tyre workshop Service. The Service Station Shop is fully stocked with snacks, drinks, ice, groceries, wood, toiletries, curios and clothing.

The nearby **Sossusvlei Lodge** has a renowned restaurant offering delectable meals and an Adventure Centre where one can book a range of exciting activities to explore the area.

For larger groups traveling together we have spacious **Group Camp Sites** that is shaded by Camel Thorn Trees and equipped with Power Outlets, Running Water, Lights, Barbeque area and walkways to ablution facilities. Separate Ladies and Gents Bathroom Facilities are available, each featuring toilets, wash basins and showers with the best views of the desert landscapes ever!



## Location

On C27 / D826 road in Southern Namibia, amidst the **Namib Desert**. At the entrance gate to the famous Sossusvlei and Sesriem Canyon.

**GPS Coordinates:**

**S24°29' 20.5" E015°48' 04.6"**

**Airfield: Sossusvlei Lodge Landing Strip**

Coordinates S24°29'22" E015°48'55", elev. 762m (2500'), rwy. 31/13, 1200m (3937')



## Distance From

Windhoek - Approx 330 km

Swakopmund - 360 km

Lüderitz - 506 km

Etosha Village - 750 km



Taleni  africa



### TALENI AFRICA RESERVATIONS

Tel: +27 21 930 4564 | Fax: +27 21 914 9930

Email: [reservations@sossus-oasis.com](mailto:reservations@sossus-oasis.com) | Web: [www.sossus-oasis.com](http://www.sossus-oasis.com)

Facebook: [www.facebook.com/SossusOasis](http://www.facebook.com/SossusOasis) | Twitter: @SossusOasis



Hotel Zum Kaiser

*Exclusive Hotel in the  
Historic Heart of Swakopmund*

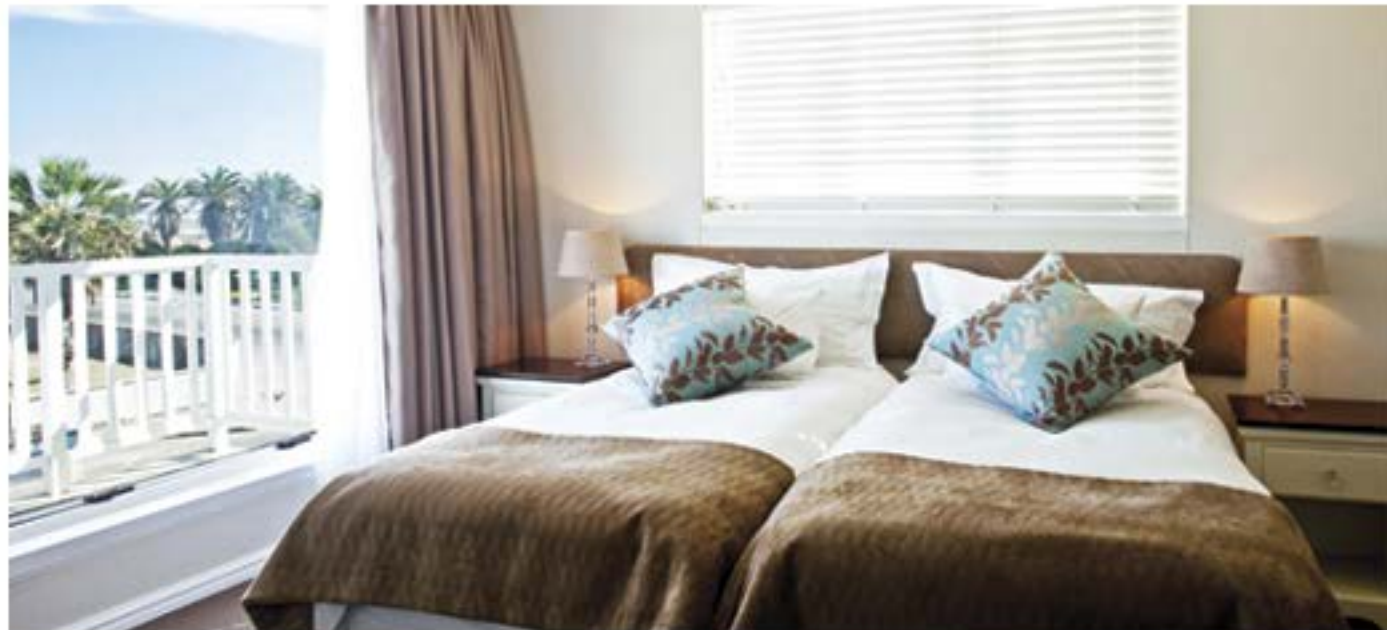
Perfectly positioned on Sam Nujoma Avenue in the picturesque Swakopmund, the luxurious **Hotel Zum Kaiser** offers direct access to the beach and the town's vibrant street life, quaint architecture, shopping and fine dining.

This exclusive hotel houses 21 fully air-conditioned bedrooms, featuring full en-suite bathrooms and all modern amenities. Tastefully decorated with a touch of classic elegance dating from imperial times, the **Hotel Zum Kaiser** creates a truly authentic and intimate ambiance

Enjoy delectable cuisine at the on-site **Bistro Zum Kaiser** and sip sun-downers whilst experiencing the spectacular sunsets over the Atlantic from the hotel's idyllic Roof Terrace. The **Hotel Zum Kaiser** is fully equipped and offers the ideal setting for conferences, banqueting and celebrations. Exciting activities in the area can be booked directly at reception.

*Let our attentive team welcome you to our kingdom and make you feel like an Emperor.*





## *Luxurious Accommodation Suites*

This exclusive hotel houses 21 fully air-conditioned bedrooms, each featuring a full en-suite bathroom, television, coffee/tea facilities, bar fridge, electronic safe and wireless internet.

The tastefully decorated **Hotel Zum Kaiser** offers a combination of Courtyard Suites, Front Facing Suites and 3 Family Rooms with inter-leading doors. Each of the Front Facing Suites is equipped with a private balcony to enjoy splendid views of the historic town and partial views of the nearby Atlantic seaboard.

Uniquely combining modern furnishings with a touch of classic elegance dating from imperial times, the **Hotel Zum Kaiser** creates a truly authentic and intimate ambiance.





## *Bistro Zum Kaiser*

The on-site **Bistro Zum Kaiser** offers a unique culinary experience combining the finest German-Namibian flavours with award-winning wines in a warm and relaxed environment.

Be spoiled for choice from the superb breakfast feast, indulging sweet treats, outstanding light meals to our exquisite main menu. These mouth-watering dishes will please even the most discerning taste buds and will leave a lasting memory to your visit.

For those exploring the vibrant streets of Swakopmund, **Bistro Zum Kaiser** is the perfect place to rest your feet and enjoy a delicious cup of freshly ground coffee.





## *Facilities & Activities*

The inviting **Roof Terrace** is the perfect place to relax and sip sun-downers as you experience the spectacular sunsets and views of where the towering sand dunes of the Namib Desert meet the roaring Atlantic Ocean.

The **Hotel Zum Kaiser** offers the ideal setting for banqueting, celebrations and business luncheons. Comprehensive facilities, equipment and wireless internet are available for **Conferences** and refreshments can be arranged to meet your requirements.

Enjoy ultimate relaxation at **Hotel Zum Kaiser's** onsite **Spa** offering a range of fantastic massages and signature treatments are available to rejuvenate your body and mind.

This luxurious hotel is within walking distance from the beach, legendary jetty and the centre of town. This picturesque town offers a rich history coupled with quaint architecture, a vibrant street life, various iconic coffee shops and local craft stalls.

For the adventure seeker, a vast range of exciting **activities** can be booked directly at our reception.



## Location

Situated in the heart of **Swakopmund** at **4 Sam Nujoma Avenue**.

GPS Coordinates:

**S22°40' 43.56" E014°31' 22.75"**



## Distance From

Walvis Bay - 35 km

Windhoek - 360 km

Sossusvlei Lodge - 340 km

Etosha Village - 500 km



Taleni  africa



### TALENI AFRICA RESERVATIONS

Tel: +27 21 930 4564 | Fax: +27 21 914 9930

Email: [reservations@hotelzumkaiser.com](mailto:reservations@hotelzumkaiser.com) | Web: [www.hotelzumkaiser.com](http://www.hotelzumkaiser.com)

Facebook: [www.facebook.com/HotelZumKaiser](http://www.facebook.com/HotelZumKaiser) | Twitter: [@HotelZumKaiser](https://twitter.com/HotelZumKaiser)





*Exclusive Campsites only 6.5km from the Okaukuejo entrance to Etosha*

Being a mere 6.5 km from the Andersson (Okaukuejo) entrance gate to Etosha National Park, **Etosha Trading Post** is the ideal stop over to refuel, refresh, and stock up on grocery supplies before continuing on your journey.

Besides the fuel station, shop and tyre workshop, **Etosha Trading Post** also provides a camping oasis that caters for both individual travellers and larger groups of friends exploring Etosha together.





## *Fuel Station, Shop & Tyre Workshop*

At **Etosha Trading Post** we aimed to create a facility that not only portrays the intricate history of the Etosha National Park and surrounds, but also simultaneously offers the local community, farmers and tourists access to basic necessities, groceries, fuel and souvenirs.

Here one can stock up on grocery supplies, snacks, drinks as well as delicious farm style take away meals. Our extensive curio deck is the perfect place to browse for the ultimate keepsake or gift for your loved ones.

The facilities at **Etosha Trading Post** include a Fuel Station and a Workshop for tyre repairs.





## *Individual Campsites*

The **8 Individual Campsites** are each equipped with Private Bathroom facilities (shower, toilet and wash basin), shaded area with wash-up facilities, Power Outlets, Running Water, Lights and a Barbeque facility.

With views towards a waterhole and the incredible sunsets over the Etosha plains it is the perfect place to relax after a busy day exploring Etosha and our beautiful surrounds.

Relax after a day in the Park by taking a refreshing dip in the camp pool, watch wildlife visiting the waterhole and be amazed by the incredible sunsets over the Etosha plains.





## *Group Campsites*

**4 Spacious Group Campsites** are ideal for larger families or groups of friends travelling together through Namibia. These sites are equipped with Power Outlets, Running Water, Lights, Barbeque area and separate Ladies and Gents Bathroom facilities each featuring toilets, wash basins and showers.

Our renowned buffet restaurant at **Etosha Village** is available for guests staying at **Etosha Trading Post** and is only 5.5km down the road (4km to turn-off). From here one can also book a range of activities including Guided Excursions to Etosha, Sundowner drives and stargazing sessions.







## *Affordable Luxury at the Entrance to Etosha National Park near Okaukuejo*

Situated only 2km from the Andersson entrance gate to Etosha National Park, **Etosha Village** uniquely combines affordability with comfort, style and exquisite cuisine.

The 55 individual suites offer a fully air-conditioned bedroom with an en-suite bathroom and a patio to enjoy the beauty that surrounds you. Two small children (under 12) can be accommodated with their parents on a fold-out sleeper couch in the unit.

Facilities include an unique open-plan bar with big screen television, 2 sparkling pools plus a kiddie pool, a restaurant serving delectable cuisine as well as a fully stocked utility and curio shop.

Explore Namibia's animal kingdom with **Guided Excursions to Etosha National Park**. Enjoy the **Walking Trails** on our reserve where various small game can be spotted from the lookout decks and hides.

Other activities include **Sundowner Drives** on our private reserve, **Stargazing** sessions to discover our famous star studded skies or a magnificent **Bush Dinner Experience** ideal for special functions or private dinners.





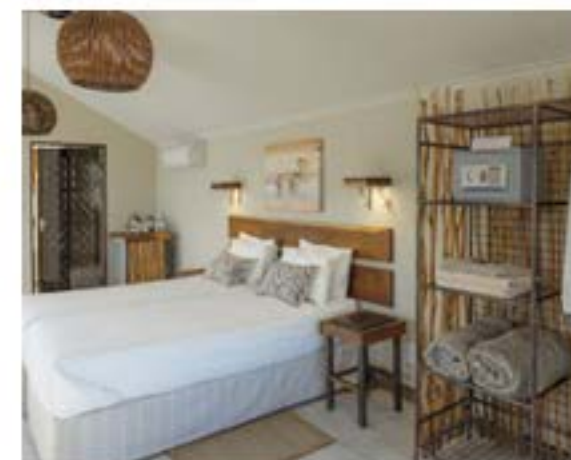
## *Accommodation Suites*

Uniquely positioned amid an indigenous Mopane forest, the accommodation units at Etosha Village ensure maximum privacy and tranquillity.

The 55 individual luxurious units offer a spacious air-conditioned bedroom and a modern en-suite bathroom with shower. Each twin-bedded room features a fridge, coffee- and tea making facilities, electronic safe as well as a sleeper couch where 2 small children (under 12 years) can be accommodated.

The patio and outside seating area create an ideal space to sit back, relax and enjoy the beauty that surrounds you.

Wheelchair friendly units are available and are equipped with a ramp instead of stairs, a more spacious bathroom for easy wheelchair access and the room has a different interior arrangement for easier access.





## *Facilities & Exquisite Cuisine*

At **Etosha Village** nature and luxury are in perfect harmony through design, comfort and the thoughtful touch of attentive staff to contribute to a truly memorable experience.

Facilities at **Etosha Village** include three **restaurant** seating areas, a unique bar with a big screen television, **two sparkling pools** plus a **kiddie pool** as well as a fully stocked **utility and curio shop**.

For the perfect safari experience, the luxurious accommodation is uniquely paired with exceptional food and award-winning wines.

**Etosha Village** is well known for inspiring cuisine and many guests have claimed that it is the best buffet dinner experience in Namibia! From the scrumptious breakfast buffet, a la carte luncheons to the popular dinner buffet, guests will be spoiled for choice to satisfy even the most discerning taste buds.

Enticing lunch or breakfast packs can also be ordered the evening before at reception to take along on self-drives or guided excursions to **Etosha National Park**.







## Activities

Enjoy the **Walking Trails** on our reserve where various small game can be spotted from the lookout decks and hides.

Let our team whisk you away to an enchanted venue in the Mopane Forest for a magnificent **Boma Dinner Experience** for your special function or private dinner.

Experience spectacular sunsets during **Sundowner Drives** on our private reserve and discover the magic of our famous star studded skies with a **Stargazing** session.

Explore Namibia's animal kingdom with **Guided Game Drives** to Etosha National Park. Guests can choose from morning, afternoon or full day excursions in custom built game viewer vehicles.



Individual Camp Site



*Exclusive Camp Site a mere 2km from the Entrance to Etosha National Park*

The Etosha Village Camp Site is nestled in the spectacular green and gold Mopani forests surrounding Etosha National Park, and caters for both Groups as well as Individual travellers.

The 2 spacious **Group Camp Sites** are ideal for larger groups and can accommodate a maximum of 25 – 30 tents. These sites are equipped with Power Outlets, Running Water, Lights, Barbeque area and separate Ladies and Gents Bathroom facilities each featuring toilets, wash basins and showers.

The 4 Individual Camp Sites are also equipped with Power Outlets, Running Water, Lights, Barbeque and a well-kept shared ablution.

Inspiring cuisine can be enjoyed at the Etosha Village Restaurant situated walking distance from the Camp Site. On-site facilities include swimming pools and a bar area with a big-screen television as well as a fully stocked utility and curio shop. Guided excursions to Etosha and sundowner drives can also be booked at reception.

Individual Camp Site Facilities



Individual Camp Site Facilities



Group Camp Site



Group Camp Site Facilities



Group Camp Site Facilities



## Location

Northern Namibia, 2km from the **Andersson entrance gate** to the famous **Etosha National Park**.

**GPS Coordinates:**

**S 19°21' 8.374" E 15°55' 47,855"**

Nearest **airfield:** **Ongava** (compacted gravel)

Coordinates S19°19'44" E015°54'50"



## Distance From

Windhoek - 415 km

Okahandja - 344 km

Swakopmund via Omaruru - 540 km

Tsumeb via Etosha - 220 km (Speed Limits)

Tsumeb via Otjiwarongo - 360 km

Okaukuejo - 20 km

Outjo - 100 km

Otjiwarongo - 170 km

Namutoni - 140 km



Taleni  africa



### TALENI AFRICA RESERVATIONS

Tel: +27 21 930 4564 | Fax: +27 21 914 9930

Email: [reservations@etosha-village.com](mailto:reservations@etosha-village.com) | Web: [www.etosha-village.com](http://www.etosha-village.com)

Facebook: [www.facebook.com/EtoshaVillage](http://www.facebook.com/EtoshaVillage) | Twitter: [@EtoshaVillage](https://twitter.com/EtoshaVillage)

Taleni  africa



## Taleni Africa Reservations

Tel: +27 21 930 4564 | Fax: +27 2 914 9930

Email: [reservations@taleni-africa.com](mailto:reservations@taleni-africa.com)

Shop G29, Willowbridge Lifestyle Centre, 39 Carl Cronje Drive, Tygervalley

P.O. Box 5798, Tygervalley, 7536 SOUTH AFRICA

[www.taleni-africa.com](http://www.taleni-africa.com)