



# WILDPLACES

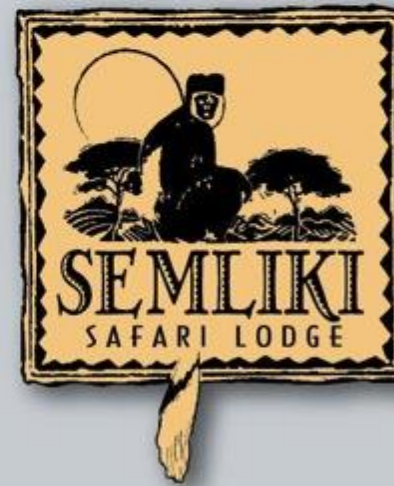
THE FINEST ACCOMMODATION IN UGANDA'S WILDEST PLACES



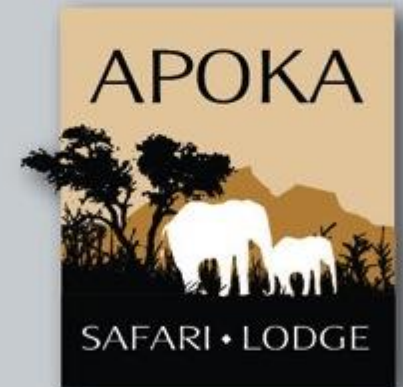
CLOUDS MOUNTAIN GORILLA LODGE  
BWINDI IMPENETRABLE FOREST



PINEAPPLE BAY  
BULAGO ISLAND LAKE VICTORIA



SEMLIKI SAFARI LODGE  
SEMLIKI WILDLIFE RESERVE

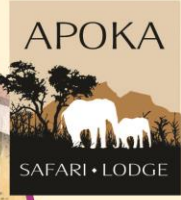


APOKA SAFARI LODGE  
KIDPO VALLEY NATIONAL PARK

WILDPLACES  
**UGANDA**

**LEGEND**

- NATIONAL PARK
- WILDLIFE RESERVE
- Mountain Gorilla tracking
- Chimpanzee tracking
- Game drive
- Viewpoint/Attraction



# CLOUDS MOUNTAIN GORILLA LODGE FACT FILE



## Location

Clouds Mountain Gorilla Lodge is situated in Nkuringo, bordering the south western corner of the Bwindi National Park. It is at 2100m with a sweeping panoramic view of the magnificent Virunga Volcanoes and the Great Rift Valley.

## Weather

Clouds Mountain Gorilla Lodge is open throughout the year.

Jan – May : Intermittent short showers through the day. Can get quite cold at times.  
Jun – Aug : Dry season. Quite hot and generally dry. A little windy, but mostly warm.  
Sep – Dec : Typical rainy season filled with storms. Tends to be a little cold in the evening.

Throughout the year, it is usually cool in the evenings.

Please remember that seasons are changing constantly in the world and are no longer predictable!

Clouds Mountain Gorilla Lodge is accessible at all times.

## Fauna and Flora

### Birding

Over 560 species with many endemics.

### Mammals

Large variety from primates and small antelope to nocturnal animals like genets and civets.

### Special Attractions

The Nkuringo gorilla family home range is around a 1.5 hours hike from the lodge (the starting point is directly outside of the lodge) depending on the movement of the group. There are currently an additional 5 other habituated gorilla families (Rushaga group) that are also easily accessible from Clouds Mountain Gorilla Lodge (45 min drive to the starting point).

## Accessibility

### By Road

Clouds is approximately 11 hours from Kampala.

### By Air

Daily scheduled flights take 1 hour 15 mins and fly into Kisoro (34 kms | 2 hours from the lodge). Charters can easily be arranged as well.

### Closest Major Airport

Kigali, Rwanda (6 hours)

Entebbe (12.5 hours)

**Assistance with full safaris and travel arrangements is available through The Uganda Safari Company: [info@safariuganda.com](mailto:info@safariuganda.com).**

## General

**Voltage:** 220 V

**Outlet:** Square 3 pin and round 2 pin.

**Communication:** MTN mobile phone service | Wi-Fi in main area.

# CLOUDS MOUNTAIN GORILLA LODGE FACT FILE

---

## Water

Our water comes from fresh rain water collection points. Bottled water is provided in cottages, on activities and is available at the bar.

## Lodge

It is remote. It is beautiful. It is intimate. Clouds is unique in Uganda: a pioneer eco tourism hotel that was built in partnership with USAID, AWF and the Nkuringo community (NCCDF). The lodge hosts 9 of Ugandan's top artists displaying their works. It embraces community and indulgent service in perfect combination. The main lodge feels like a ski chalet in the alps. Or a stone palace in the Rocky Mountains. Soaring ceilings, massive exposed wooden beams, big picture windows with endless views of treetops, volcanoes and mountains. But with the gentle and warm welcome, the quiet dedication of the personal butlers and the smiles on the faces of virtually all the staff, this can only be in Uganda.

## Accommodation

Guests at Clouds stay in large cottages built of local volcanic stone. Each one has a large sitting room with double-sided fireplace, vast overstuffed armchairs, hand-woven carpets, private verandah and comfortable bedrooms with en suite bathrooms. There are 5 double cottages and 2 family cottages (each with 2 private bedrooms and en suite bathrooms)

## Views

Open views abound of the valley and the majestic Virunga volcanoes. Often one can see the volcanoes glowing red in the night sky.

## Total Capacity

18 guests in 7 rooms.

## Children

Need to be aged 15 years and above in order to track the Gorillas, but children of all ages are welcome at the Lodge. Children's activities can be arranged whilst adults are tracking.

## Activities | Other Facilities

Gorilla tracking (access to 6 gorilla families). Forest walks. Birding. Community tours and Batwa experience trips. Private dinners. Massage.

## Rates

Contact: [info@wildplacesafrica.com](mailto:info@wildplacesafrica.com).

## Inclusions

All meals, teas & coffees and bar (except premium brands). Laundry.

## Exclusions

Premium brand drinks. Park fees (where applicable). All transfers (including to/from Kisoro airstrip and the Rushaga gorilla groups). Gorilla permits. Guided birding trips. Community walks & tours. Massage.

## Park Fees

Entry fees paid to the Uganda Wildlife Authority are required when entering any of Uganda's national parks or wildlife reserves and are not part of the lodge fees. For more information on park entrance fees, consult: [www.uwa.or.ug](http://www.uwa.or.ug) or enquire with [info@wildplacesafrica.com](mailto:info@wildplacesafrica.com).



Clouds  
*mountain gorilla lodge*



Clouds  
*mountain gorilla lodge*



Clouds  
*mountain gorilla lodge*



Clouds  
*mountain gorilla lodge*





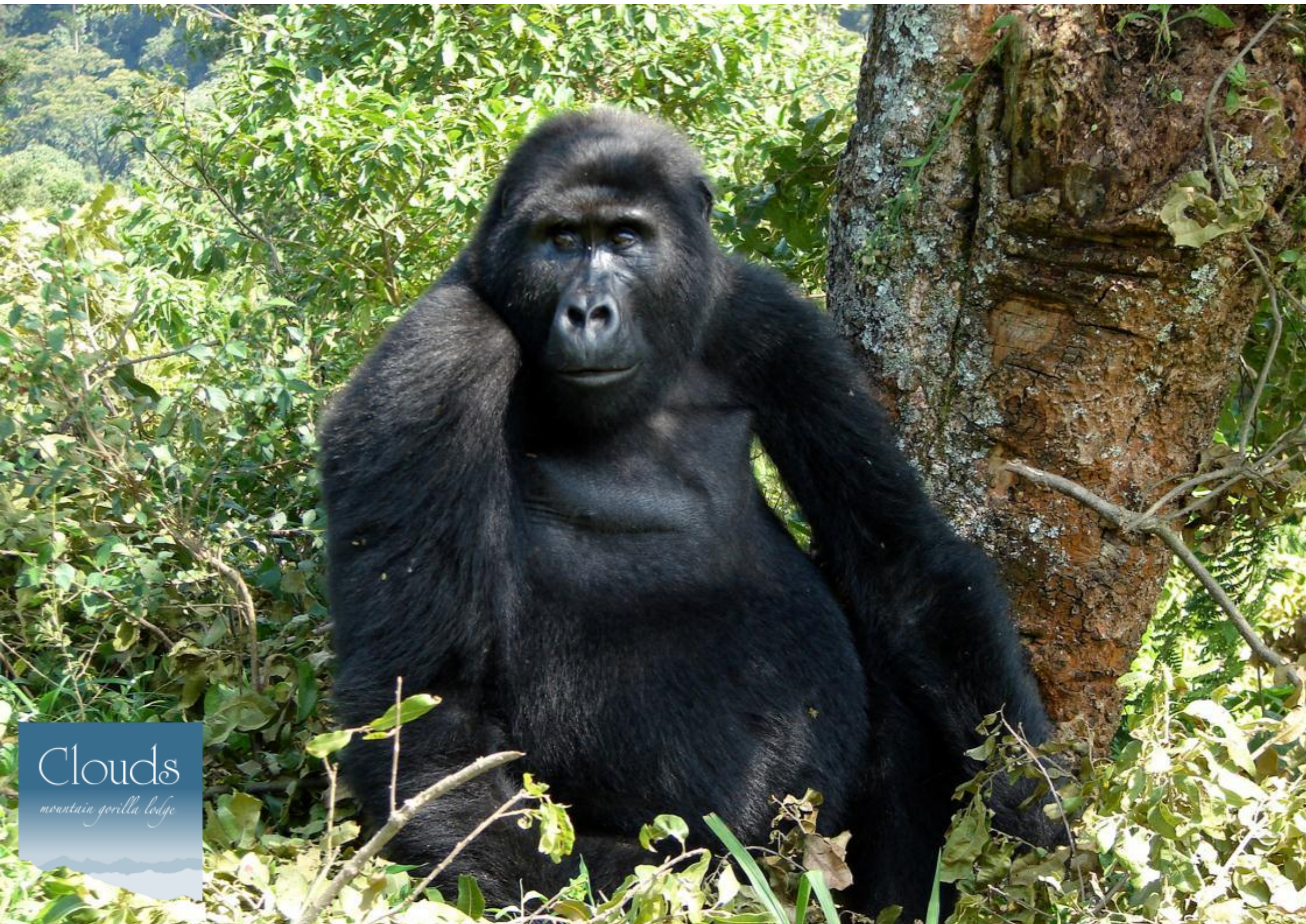
Clouds  
*mountain gorilla lodge*



Clouds

*mountain gorilla lodge*

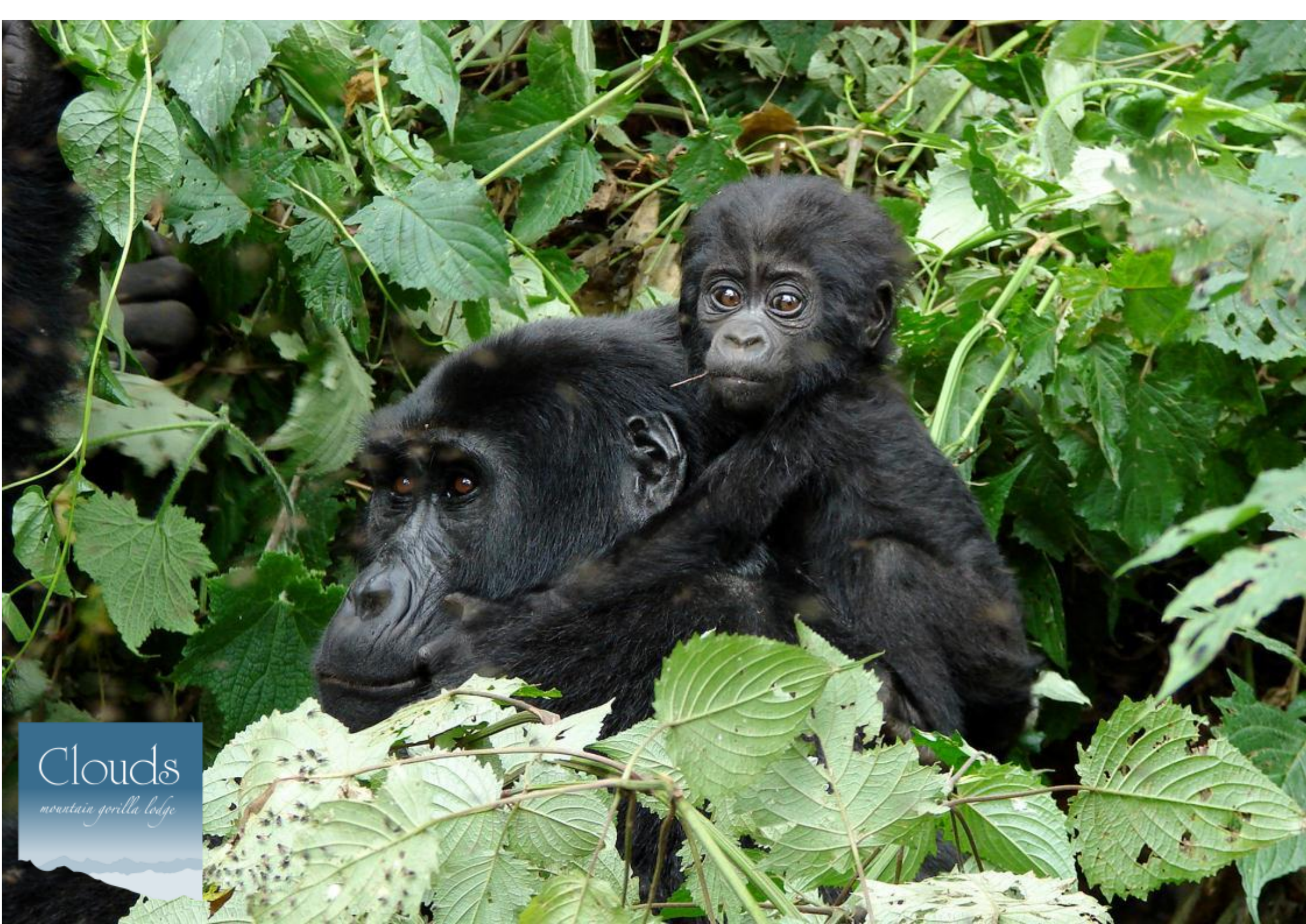




Clouds

*mountain gorilla lodge*





Clouds  
*mountain gorilla lodge*